

New V12-1400, V12-1550 and V12-1800.

Power to get your yacht up to speed.

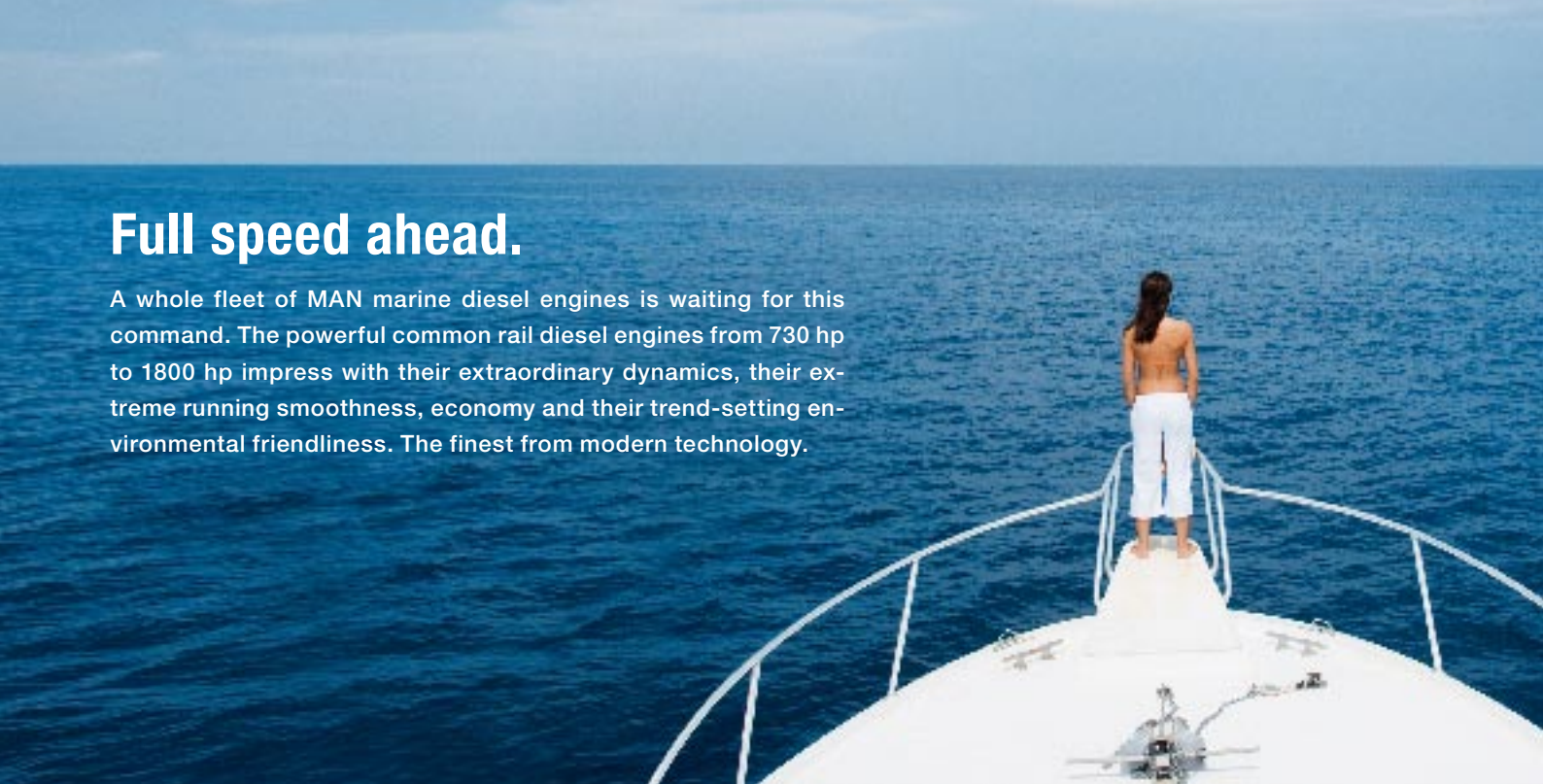
Powered by MAN.

MAN Nutzfahrzeuge Group



Full speed ahead.

A whole fleet of MAN marine diesel engines is waiting for this command. The powerful common rail diesel engines from 730 hp to 1800 hp impress with their extraordinary dynamics, their extreme running smoothness, economy and their trend-setting environmental friendliness. The finest from modern technology.



Engine description V12-1400, V12-1550 und V12-1800.

Characteristics	V12-1400 / V12-1550	specials V12-1800
Cylinders and arrangement	12 cylinders in 90° V design	
Operation mode	4-stroke diesel engine watercooled	
Turbocharging	1-stage exhaust turbocharging intercooler	2-stage exhaust turbocharging
Number of valves	4 valves per cylinder	
Fuel system	Common Rail direct fuel injection with electronic control	
Engine lubrication	Closed system with forced feeding, oil cooling and filtering	
Type of cooling	Plate heat exchanger seawater cooled	
Engine electric	Electronic injection control (EDC) Electronic engine monitoring including diagnostic unit	
Exhaust gas status	IMO/MARPOL 73/78, EPA Tier 2 (only for private use), Recreational Craft Directive 94/25/EC	
Fuel	DIN EN 590	

Dimensions		V12-1400	V12-1550	V12-1800
A-Overall width of engine	mm	1 153	1 153	1 153
B-Overall length of engine	mm	2 124	2 124	2 087
C-Overall height of engine	mm	1 229	1 229	1 275
D-Top of engine to crankshaft centre	mm	825	825	811
E-Length of engine from front end to edge of flywheel housing	mm	1 631	1 631	1 653

For detailed examinations of installation dimensions, please order drawings from our factory.

MAN engines have outstanding qualities

- High tractive power even at low speeds
- Powerful acceleration and rapid reaction to commands
- High performance combined with low weight
- Compact, space-saving design
- Large operation range owing to low consumption
- Low running costs and long service life
- Low emission values
- World-wide service network with rapid supply of spare parts

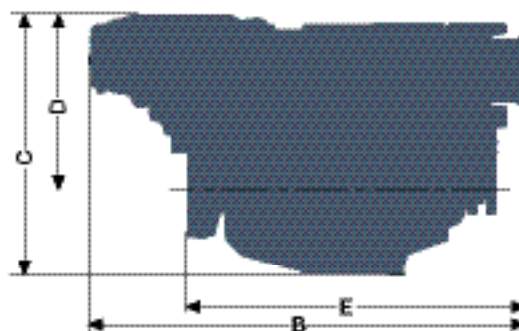
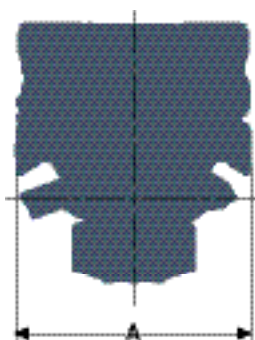
Technical data

Type of engine		V12-1400	V12-1550	V12-1800
Displacement	l	24.24	24.24	24.24
Maximum output to DIN ISO 3046-1 ¹	kW (hp)	1 029 (1 400)	1 140 (1 550)	1 324 (1 800)
Rated speed	rpm	2 300	2 300	2 300
Maximum torque	Nm	4 700	5 200	6 020
at speed	rpm	1 200 - 2 100	1 200 - 2 100	1 200 - 2 100
Weight (dry)	kg	2 270	2 270	2 365
Fuel consumption at rated power	l/h	261	295	339

¹ The ratings are only for operation of private yachts.

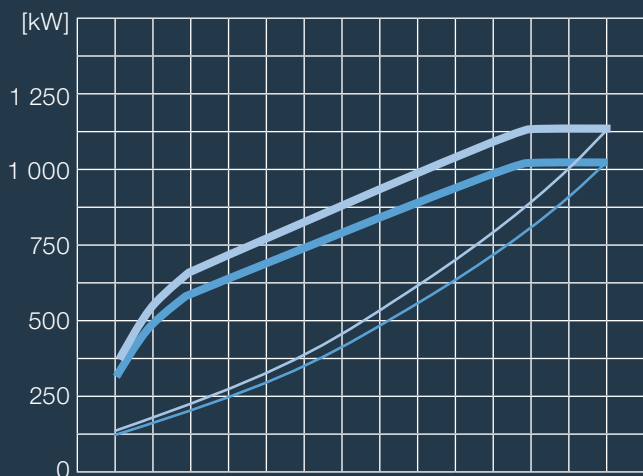
Definition of operation

The engines for light duty operation are designed for a maximum of 1 000 annual operating hours with up to 20 percent of time at full load, an average of up to 50 percent load application and no wide-open throttle below rated speed.

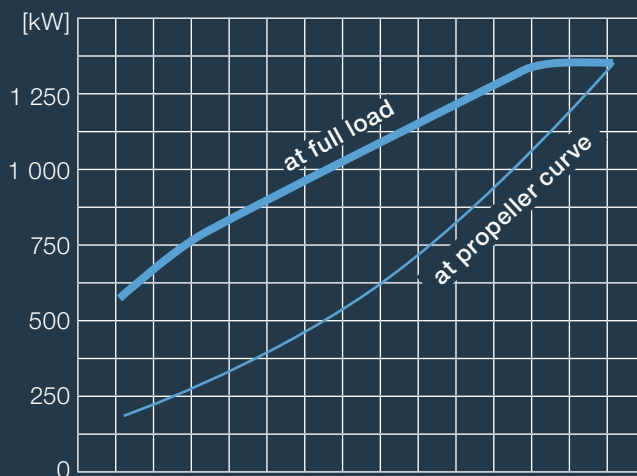


Power charts.

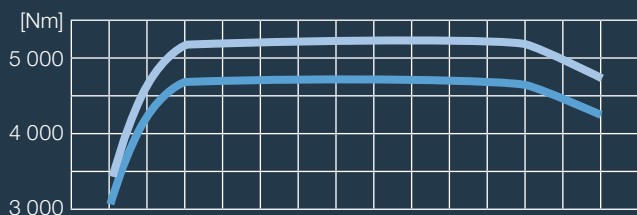
Power V12-1400 / V12-1550



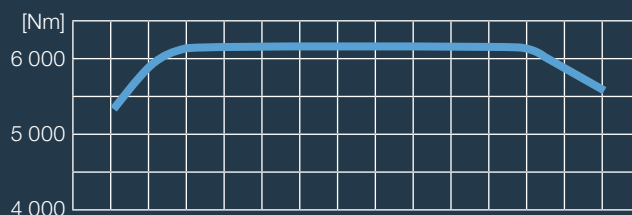
Power V12-1800



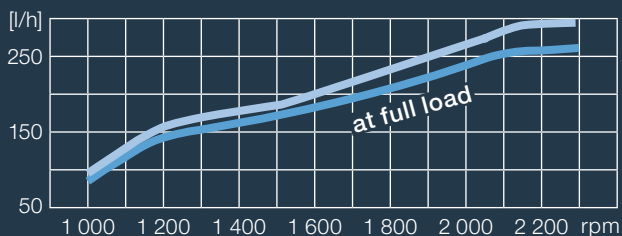
Torque V12-1400 / V12-1550



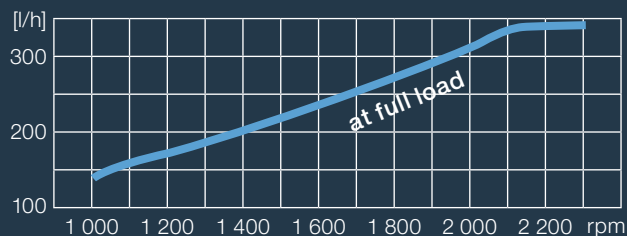
Torque V12-1800



Fuel Consumption V12-1400 / V12-1550



Fuel Consumption V12-1800



- V12-1400 with 1 029 kW (1 400 hp at 2 300 rpm)
- V12-1550 with 1 140 kW (1 550 hp at 2 300 rpm)

- V12-1800 with 1 324 kW (1 800 hp at 2 300 rpm)

D 114.473/E · mu 08094 · Printed in Germany

Text and illustrations are not binding. We reserve the right to make modifications in the course of technical progress.

MAN Nutzfahrzeuge AG

Engines & Components, Dept. SEM

Vogelweiherstraße 33

90441 Nuremberg, Germany

marinemotor@de.man-mn.com

www.man-engines.com

